

## Technical data

### Frequency response

110 Hz - 15,000 Hz

### Impedance

4  $\Omega$

### Ambient temperature range

-40 °C to +105 °C

### Air humidity

Max. 93 %

### Total weight

118 g

### Scope of delivery

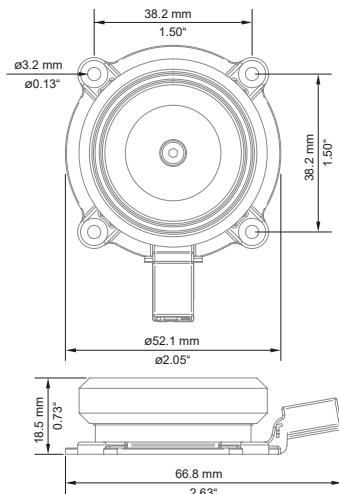
1 x CiX E50-S4

1 x Connection cable

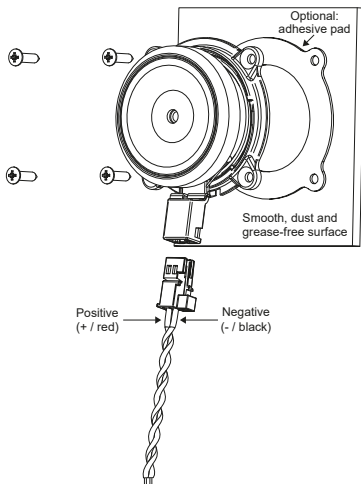
1 x Mounting material

1 x Adhesive pad

## Dimensions



## Mounting and wiring



## Are you happy with your purchase?

If so, why not spread the joy?

Leave a positive review!

Review us  
on Google



Follow us  
@audiotecfischer



Your feedback helps us grow!

## Not completely satisfied?

We're here to help!

Contact our Support Team:

**Web:** [www.audiotec-fischer.com](http://www.audiotec-fischer.com)

**Mail:** [contact@audiotec-fischer.com](mailto:contact@audiotec-fischer.com)

Your feedback is invaluable in making things right! Thank you for choosing a HELIX product.  
Your opinion matters!

**CiX E50-S4****USER MANUAL****ENGINEERED IN GERMANY****COMPOSE****CREATE YOUR COMPOSITION**

Go to  
**[www.audiotec-fischer.com/compose](http://www.audiotec-fischer.com/compose)**  
to explore the whole  
HELIX COMPOSE platform

**General instructions for installing HELIX loudspeakers**

To prevent damage to the speakers and possible injury, read this manual carefully and follow all installation instructions.

This product has been checked for proper function prior to shipping and is guaranteed against manufacturing defects.

For a proper performance and to ensure full warranty coverage, we strongly recommend to get this product installed by an authorized HELIX dealer.

If you choose to perform your own installation read the following information and precautions carefully.

Failure to follow the stated precautions may result in personal injury and / or damage to the audio system or vehicle.

- Always make sure that the speaker will fit into the intended mounting location and that there is adequate depth for the magnet system.
- Take care that the mounting surface is smooth, dry, clean and grease-free.
- Ensure that the loudspeaker is correctly connected in polarity. The positive lead of the loudspeaker is marked red.
- Make sure that all speaker wiring is fully protected from cutting or wear at sharp edges, which can lead to short circuits that may damage your head unit, amplifier and / or speaker system.
- Make sure that all components are mounted properly.
- Do not mount the speaker where water may splash on them.
- The quality of the installation has a significant effect on the overall performance of the speaker.

**Warranty disclaimer**

The warranty service is based on the statutory regulations. Defects and damage caused by overload or improper handling are excluded from the warranty service. Any return can only take place following prior consultation, in the original packaging together with a detailed description of the error and a valid proof of purchase. Technical modifications, misprints and errors excepted! For damages on the vehicle and the device, caused by handling errors of the device, we can't assume liability.



This product has been issued a CE marking. This means that the device is certified for use in vehicles within the European Union (EU).



This product has been issued a UKCA marking. This means that the device is certified for use in vehicles within the United Kingdom.



This product has been issued an EAC marking. This means that the device is certified for use in vehicles within the Eurasian Customs Union.



This symbol means the product must not be discarded as household waste, and should be delivered to an appropriate collection facility for recycling. Follow local rules and never dispose of the product with normal household waste. Correct disposal of old products helps prevent negative consequences for the environment and human health.

**AUDIOTEC FISCHER**  
AUDIOTEC FISCHER GmbH  
Hünegräben 26 - 28  
57392 Schmallenberg  
Germany