

Technology - Art - Sound
Manufactured by
elettromeia



POWER
FOR THE **WAVES**
PURE MARINE
CERTIFIED PRODUCT

The User's Manual is also
available on our web site
www.hertz-audio.com



marine **HMR BT**

WATERPROOF BLUETOOTH
RECEIVER

hertz-audio.com



QUICK START GUIDE

Rev. 02

HERTZ

The Sound Experience

■ BASIC OPERATION

WARNING: when the unit is turned on, starting and stopping the engine with its volume raised to the maximum level may cause hearing damage. Make sure you adjust the volume in advance.



Power On/Off

Note:

- Start the engine before using this unit.
- Be careful about using this unit for a long time without running the engine.
- If you drain the vessel battery, you may not be able to start the engine and this can reduce the service life of the battery.

1. Start the engine.



Engine **ON** position

2. Press  to turn the unit ON.

■ INSTALLATION

BEFORE STARTING

1. This device is exclusively for use in vessels with a negative ground 12/24 V power supply.
2. Read these instructions carefully.
3. Make sure the battery "-" terminal is disconnected before starting. This is to prevent short circuits during installation. (Figure 1)

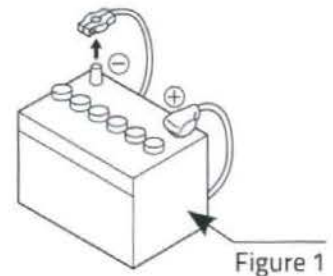


Figure 1

INSTALLATION CAUTIONS

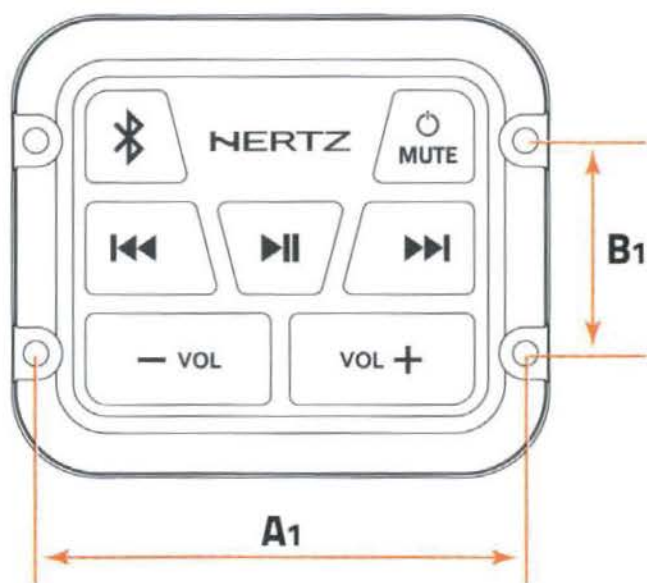
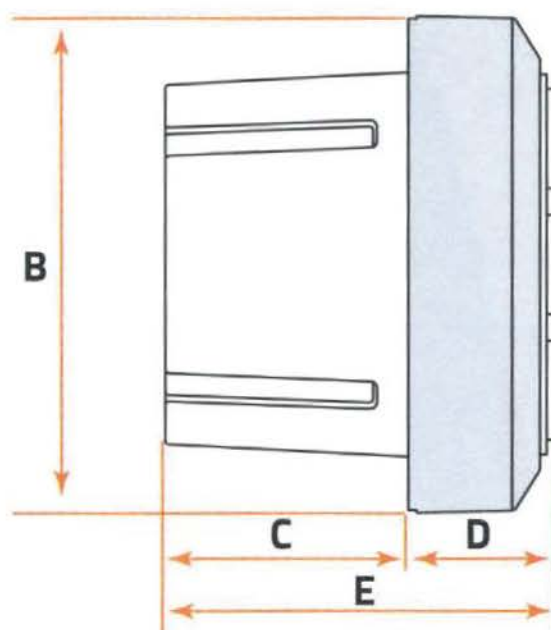
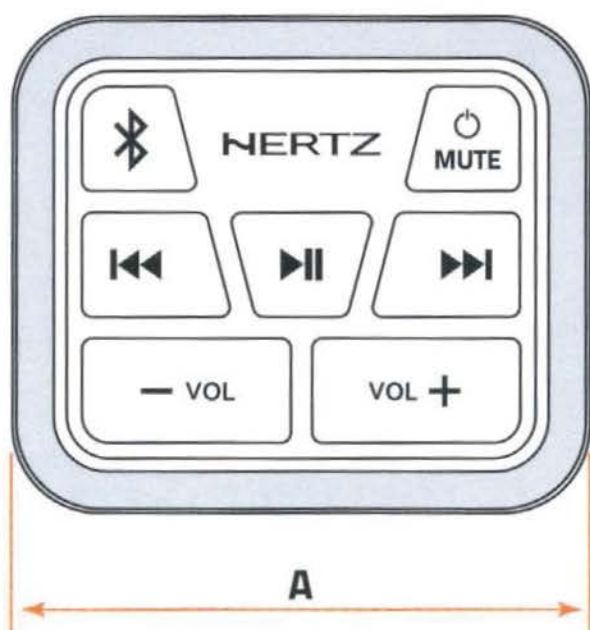
1. In order to avoid any interference, do not install the unit in the proximity of the engine compartment.
2. The use of unauthorized parts can cause permanent damage to the unit.
3. Always check your wire connections to ensure proper installation before turning the unit on.
4. Consult with your nearest dealer for proper installation or if other accessories are needed to complete the installation.
5. Seek assistance if modifications or drilling holes to your vessel is needed.
6. Do not install the unit where it will be subjected to excessive moisture, dust, dirt, foreign particles or vibration. Areas of high temperature from the engine, direct sunlight, or heat sources should also be avoided.
7. Do not install the unit in a location where it will interfere with the vessel operation, or it will injure the passengers if there is a sudden or emergency stop.



Information on electrical and electronic equipment waste (for those European countries which organize the separate collection of waste)

Products which are marked with a wheeled bin with an X through it can not be disposed of together with ordinary domestic waste. These electrical and electronic products must be recycled in proper facilities, capable of managing the disposal of these products and components. In order to know where and how to deliver these products to the nearest recycling/disposal site please contact your local municipal office. Recycling and disposing of waste in a proper way contributes to the protection of the environment and to prevent harmful effects on health.

3 Dimensioni / Dimensions / Maße / Dimensiones / Dimensões / Dimensions / 寸法 / Dimensies



SIZE

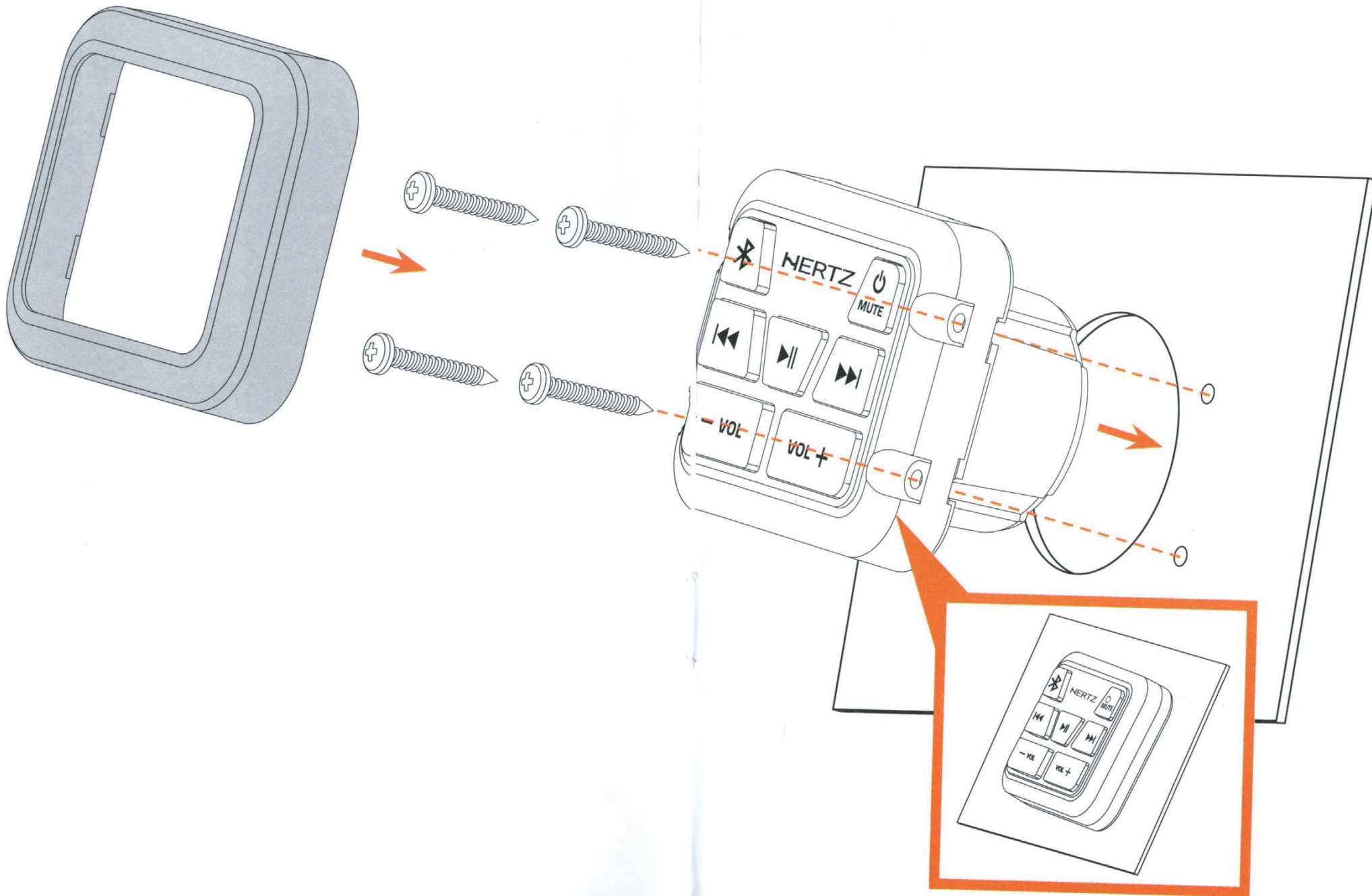
	A	A ₁	B	B ₁	C	D	E	
HMR BT	73,2	64,1	63,7	27,7	39,1	16,7	55,8	mm
	2.9	2.5	2.5	1.09	1.54	0.66	2.2	in.

MOUNTING

Mounting Hole diameter mm (in.)

Ø 45 (1.77)

4 Montaggio / Mounting / Montage / Montaje / Montagem /
Assemblée / 取り付け / Bijeenkomst



WARNING: for your safety, while boating, keep the volume to a level at which



external sounds can be heard.

1. This unit uses precision parts and components for its operation. In the event of any operating issues, never open the case or disassemble the unit. Contact your Hertz dealer or service center.

2. FCC STATEMENT

2.1 This device complies with Part 15 of the FCC Rules.

Operation is subject to the following two conditions:

(1) This device may not cause harmful interference.

(2) This device must accept any interference received, including interference that may cause undesired operation.

2.2 Changes or modifications not expressly approved by the party responsible for compliance could void the user's authority to operate the equipment.

FCC ID: 2ASUD-HMRBT

NOTE: This equipment has been tested and found to comply with the limits for a Class B digital device, pursuant to Part 15 of the FCC Rules. These limits are designed to provide reasonable protection against harmful interference in a residential installation. This equipment generates, uses and can radiate radio frequency energy and, if not installed and used in accordance with the instructions, may cause harmful interference to radio communications. However, there is no guarantee that interference will not occur in a particular installation. If this equipment does cause harmful interference to radio or television reception, which can be determined by turning the equipment off and on, the user is encouraged to try to correct the interference by one or more of the following measures:

- Reorient or relocate the receiving antenna.
- Increase the separation between the equipment and receiver.
- Connect the equipment into an outlet on a circuit different from that to which the receiver is connected.
- Consult the dealer or an experienced radio/TV technician for help.

FCC Radiation Exposure Statement.

This equipment complied with FCC radiation exposure limits set forth for an uncontrolled environment. This equipment should be installed and operated with minimum distance 20 cm between the unit & your body.

3. The Bluetooth word mark and logos are registered trademarks owned by the Bluetooth SIG, Inc. and any use of such marks by Elettromedia spa is under license. Other trademarks and trade names belong to their respective owners.

4. IC warning

This device complies with Industry Canada's license-exempt RSS standard(s).
Operation is subject to the following two conditions:

- (1) This device may not cause interference
- (2) This device must accept any interference, including interference that may cause undesired operation of the device.

This Class B digital apparatus complies with Canadian ICES-0003.

Le présent appareil est conforme aux CNR d'Industrie Canada applicables aux appareils radio exempts de licence.

L'exploitation est autorisée aux deux conditions suivantes:

- (1) l'appareil ne doit pas produire de brouillage
- (2) l'utilisateur de l'appareil doit accepter tout brouillage radioélectrique subi, même si le brouillage est susceptible d'en compromettre le fonctionnement.

This equipment complies with IC radiation exposure limits set forth for an uncontrolled environment. The antenna should be installed and operated with minimum distance of 20 cm between the radiator and your body.

This transmitter must not be co-located or operating in conjunction with any other antenna or transmitter.

Cet appareil est conforme aux limites d'exposition aux rayonnements de la IC pour un environnement non contrôlé. L'antenne doit être installée de façon à garder une distance minimale de 20 centimètres entre la source de rayonnements et votre corps. L'émetteur ne doit pas être colocalisé ni fonctionner conjointement avec à autre antenne ou autre émetteur.

WARNING: changes or modifications to this unit not expressly approved by the party responsible for compliance could void the user's authority to operate the equipment.

IC ID: 24882-HMRBT

6 Specifiche tecniche / Technical Specifications / Technische Spezifikationen / Especificaciones técnicas / Especificações técnicas / Spécifications techniques / 技術仕様 / Technické Údaje

FML024_23REV.D

All specifications subject to change without notice

BLUETOOTH

Specification	Bluetooth Version 5.0 with Qualcomm® aptX™ HD audio
Supported Profiles	<ul style="list-style-type: none"> ▪ A2DP (Advanced Audio Distribution Profile) ▪ AVRCP 1.5 (Audio/Video Remote control profile) ▪ SSP (Simple Secure Pairing)
Connection Range	Up to 10m (30ft.)*
	*Maximum range is achieved in line-of-sight installations, actual range will vary based on installation specifics.

AUDIO

Line Max Output Level @ 0.1 % THD	4Vrms x 2 (L/R)
-----------------------------------	-----------------

GENERAL

Operating Voltage	8-28V dc
Grounding System	Negative Ground
Fuse rating	2A (Mini ATC type)
Operating Temperature Range	-20°C to 70°C (-4°F to 158°F)
IP Protection	IPx67 (IEC60529)**
Size (mm/in.)	73,7 x 63,7 x 16,7 / 2.9 x 2.5 x 0.66
Weight (Kg/Lbs)	0,153 / 0.338 (including the cable)

NOTE: Specifications and design are subject to change without notice for further improvement.

****IPx7 Water Resistance Rating:** This product has been tested to withstand immersion in water, up to 1 meter (3.28 ft.) deep, for up to 30 minutes (when properly installed). Note - while designed to be water resistant, this product should never be submerged under water for prolonged periods or subjected to activity that creates pressure on it that exceeds its depth rating.

BLUETOOTH: The Bluetooth® word mark and logos are registered trademarks owned by Bluetooth SIG, Inc. and any use of such marks by Elettromedia srl is under license.

aptX™ HD: Qualcomm aptX is a product of Qualcomm Technologies, Inc. and/or its subsidiaries. Qualcomm is a trademark of Qualcomm Incorporated, registered in the United States and other countries. aptX is a trademark of Qualcomm Technologies International, Ltd., registered in the United States and other countries and any use of such marks by Elettromedia srl is under license.

HERTZ

PART OF **ELETTROMEDIA**

Strada Regina Km 3,500 - Marignano
62018 Potenza Picena (MC) Italy
T +39 0733 870 870 - F +39 0733 870 880
www.elettromedia.it

UE DECLARATION OF CONFORMITY

(DICHIARAZIONE DI CONFORMITÀ UE)

Name and Address of Manufacturer (Nome e Indirizzo del Produttore)	Elettromedia s.p.a.
	C.da Marignano 62018 Potenza Picena (MC) Italy
Brand Name (Marchio)	HERTZ
Model (Modello)	HMR BT
Product (Prodotto)	BLUETOOTH RECEIVER
Standards of Test (Normative di Test)	EMC DIRECTIVE – 2014/30/EU: <ul style="list-style-type: none">• EN 55032: 2015 + A11: 2020• EN 55035: 2017 + A11: 2020
	RED DIRECTIVE: 2014/53/EU: <ul style="list-style-type: none">• ETSI EN 301 489-1 V2.2.3: 2019• ETSI EN 301 489-17 V3.2.4: 2020• ETSI EN 300 328 V2.2.2: 2019• EN 62368-1:2020 + A11:2020• EN 50663: 2017• EN 62479: 2010
	ROHS DIRECTIVE:2011/65/EU & 2015/863/EU
Reports N° (Rapporti di Prova)	TZ221103830-RE TZ221103830-BLE, TZ221103830-S, TZ221103830-EMF CCI220800138EN

I, the undersigned, as legal representative of the company Elettromedia, declare that the equipment complies with the directives and standards mentioned above.

(Il sottoscritto, in qualità di legale rappresentante della ditta Elettromedia, dichiara che l'apparecchiatura è conforme alle direttive e agli standard sopra citati)

Potenza Picena 14/12/2022

Elettromedia Srl
Maurizio Riccobelli
Legal Representative

