

INFPRV90 Owner's Manual



 **Infinity**
by **HARMA**®



3325 South Morgans Point Rd.
Mt. Pleasant, SC 29466
www.prospecelectronics.com

TABLE OF CONTENTS

Table of Contents	pg 1
Product Description	pg 2
Front Panel Layout	pg 3
User Operation	pg 4
General	pg4
Radio	pg 4
Auxiliary Input	pg 4
USB	pg 5
Bluetooth	pg 5
Installation	pg 6
Wiring	pg6
Troubleshooting	pg 7
Installation Bulletin	pg 8

Product Description

This radio is another forward thinking [product from Infinity by Harman. Other Harman brands include JBL, JBL Professional, AKG, Mark Levinson, Harman Kardon, and Revel. Harman was purchased by Samsung in 2016. Prospec Electronics is Harman's exclusive distributor to OEM's in the marine, side by side, golf car, and hot tub industries. Our products range from mechless receivers, amplifiers, subwoofers, speakers, and other accessories. Prospec is located in Mount Pleasant, S.C., a stone's throw away from Charleston, S.C. Should you need our expertise, please do not hesitate to give us a call. We're all about the music and this music should resonate from components verified to complement your hard earned off road purchase.

The PRV90 incorporates the following features:



AM/FM



Bluetooth Audio Streaming



USB input (for USB drives only)



Auxiliary input



Waterproof faceplate



40W x 4 amplifier

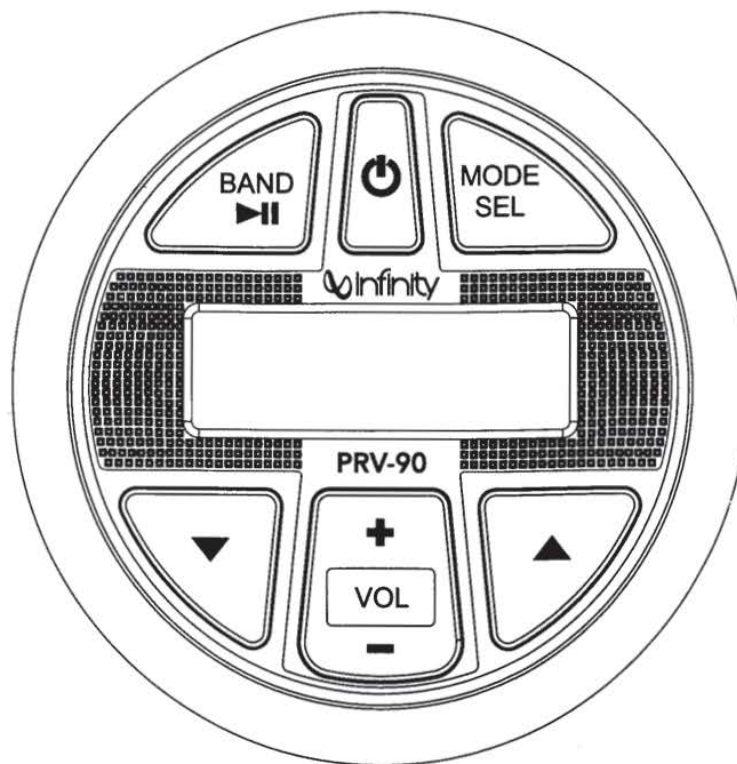


U.S. and European tuning



Charging through USB

Front Panel Layout



POWER

Power On/Off button.

Short push for the first time to turn the unit on.

With unit powered on, short push for MUTE feature.

Press and hold for more than 2 seconds to turn the unit off.

MODE SEL

Mode Function.

Switches amongst Radio, USB and Auxiliary mode.

SEL stands for SELECT.

BAND ▶▶

In Radio mode, this works Band Function.

In MP3 playing mode, it works Play/Pause function.

VOL +

Volume Increase.

VOL -

Volume Decrease.



Track Down / Tune Down / Reverse



Track Up / Tune Up / Fast Forward.

General Operation

A. SEL button

Press and hold this button to enter into SELECT function, then repeatedly short push in succession to access the following menu options: Bass, Treble, Balance, Fader, Loud, EQ, Beep, Initial Volume, Area. Press the VOL+ or VOL- to adjust the options.

- **LOUD.** Choose between Loud ON or OFF.
- **EQ.** Choose between Classic, Pop, Rock, Jazz and EQ off.
- **Beep.** Choose between Beep ON, Beep 2ND, Beep OFF. Beep ON will result in a sound at the press of every button; Beep 2ND will result in the beep sound once the button is long pressed; Beep OFF results in the beep sound off completely.
- **Initial Volume.** Refers to the loudness level upon start of the receiver.
- **AREA.** Choose between USA and Europe.

Radio Operation



A. Press ►|| button (BAND function) to access FM and AM. There are three FM bands and two AM bands.

B. Tuning. A short press of the ▼ or ▲ button results in a search of the station and stoppage at station of next sufficient signal strength. A long press results in manual tuning mode, allowing you to search one odd digit frequency at a time. (It will revert back to AUTO tune mode without operation in 5 seconds.)

Auxiliary Input Mode






A. Press the Mode button until "AUX" appears on the LCD screen.

B. The use of auxiliary mode allows you to play the portable music device through the headphone jack.

Note: An additional accessory/adaptor must be purchased in order for this to happen. Prospec's part, SEAMINI2, or SEAUSBMINI36 fulfills this option.


USB Operation

Note: USB slot is for USB flash drives only. For play of other brands of media, please use the auxiliary input or Bluetooth options.

- A. Insert a USB flash drives into the USB slot. *Songs must be of the mp3 or wma format.*
- B.  button. Press to pause the track. Press again to resume play.
- C.  and  button (Track Up / Track Down)
Short press Track Up or Track Down button to select the next or previous track.
Press and hold Track Up or Track Down button to fast forward or rewind the current track respectively.

Bluetooth Operation

Your media device must incorporate the Bluetooth option in order to stream music.

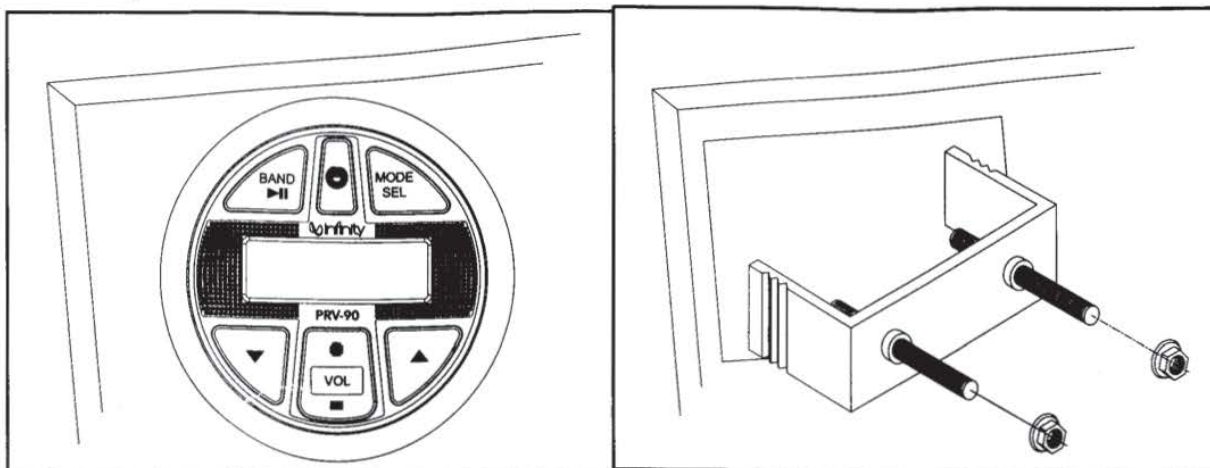
- A. First, make sure you are in the BT mode.
- B. While in BT mode, press and hold BAND button until PAIRING appears.
- C. Next, go to settings on the Bluetooth device and turn the Bluetooth option to “on”.
Pick the “PRV-90” option on your Bluetooth enabled device
If your stereo does not immediately pair, press BAND. This will allow the pairing process to finalize. A higher pitch frequency noise will alert you to the connection/success! The display will also read “CONN OK” (connection ok).
- D. To disconnect your device, press and hold BAND button. “DISCONN” will appear letting you know you have successfully disconnected.
- E. While BT Music playing, push  to Pause playback.

Cleaning Note: Do not use a pressure washer or chemicals to clean this faceplate. Use a sponge, soap, and water.

Installation

A mounting gasket has been added inside the package for convenience. Trace along the outside edge and this will be your cutout.

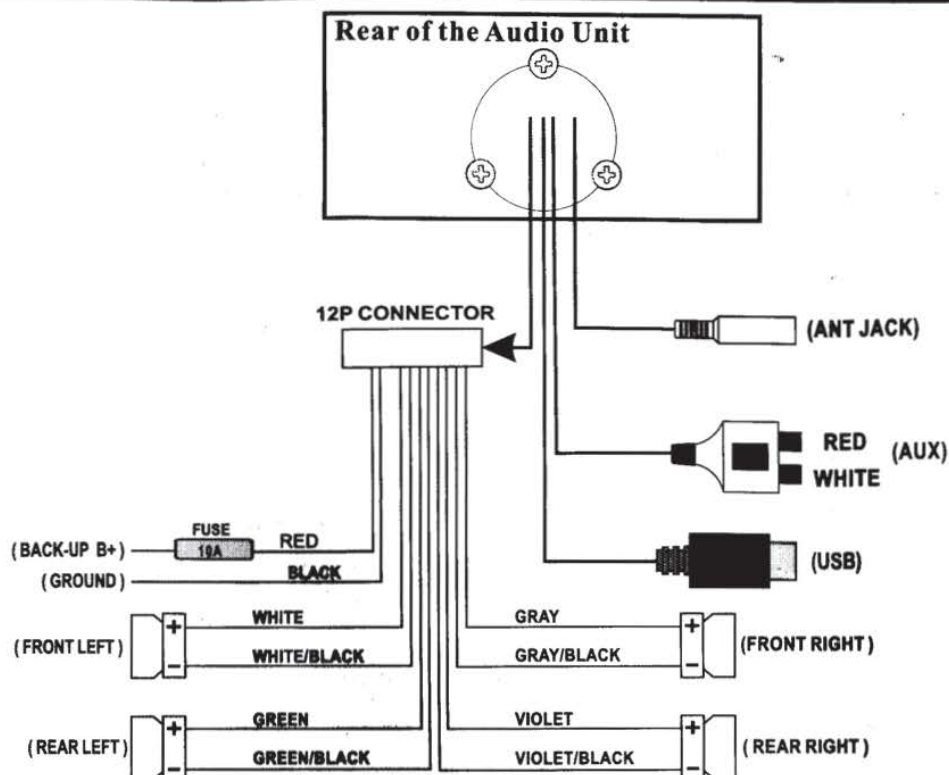
Mounting Illustration



1. Do not install beneath cup holders

2. See important installation instructions on page 8.

Wiring Identification



Troubleshooting

*Note: In many respects, a stereo acts much like a computer and occasionally requires a reboot. In the unlikely event of product malfunction, a reset can usually fix the issue.

Reset Function: With the unit powered off, press SEEK DOWN then SEEK UP in succession three times in a row. Once this occurs, the display will read SYS CLR, indicating a successful reset.

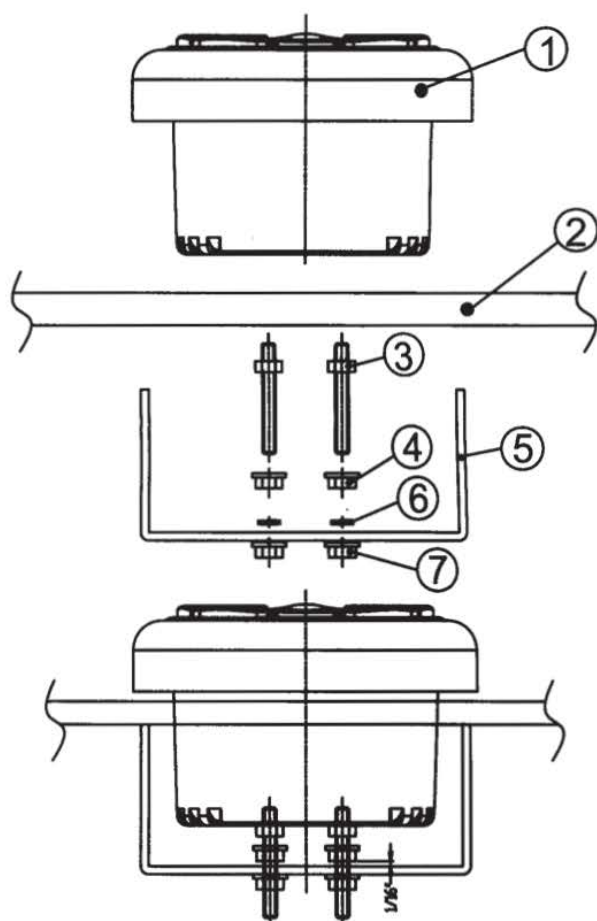
Issue	Cause	Solution
No power	<ol style="list-style-type: none">1. Incorrect wiring2. Fuse is blown3. Low battery voltage	<ol style="list-style-type: none">1. Double check wiring2. Replace fuse3. Check voltage of vehicle battery with multimeter. Voltage must be at least 11V.
No Sound	<ol style="list-style-type: none">1. Speaker connection came loose2. Bad speaker3. Output blown4. Volume too low on media device	<ol style="list-style-type: none">1. Double check connections.2. Replace bad speaker with known good speaker and connect.3. Send unit in for repair.4. Increase volume of media device
No Reception	<ol style="list-style-type: none">1. Antenna not firmly seated in socket	<ol style="list-style-type: none">1. Insert firmly
USB stick not reading	<ol style="list-style-type: none">1. File must be a mp3 or wma file	<ol style="list-style-type: none">1. Convert format to mp3 or wma.
While in Bluetooth mode:		
No Connection	<ol style="list-style-type: none">1. You are not connected to the "PRV90" address on your portable media device.2. Out of range3. The connection is already in use.	<ol style="list-style-type: none">1. Choose "PRV90"2. Bring portable media device closer to the receiver. Device needs to be within 30'.3. Ask the person who first paired to drop out.

INSTALLATION BULLETIN

To avoid possible water ingress into wire harness area, route the harness in the downward direction as shown below on the left. Do not route the harness in the upward direction as shown on the right.



Installation Instructions



NO.	PART DESCRIPTION
1	RADIO
2	MOUNTING PLATE
3	MOUNTING STUDS
4	JAMB NUTS
5	MOUNTING BRACKET
6	SPRING WASHER
7	OUTER NUTS

Instructions:

1. Install jamb nuts (4) loosely on mounting studs (3), so they will not touch mounting brackets (5) when installed.
2. Slip mounting bracket (5) on and make flush with mounting surface (2).
DO NOT TIGHTEN
3. Snug spring washer (6) and outer nuts (7) against mounting plate (2).
DO NOT TIGHTEN
4. Position jamb nuts (4) approximately 1/16" from mounting bracket.
5. Tighten outer nuts (7) completely.

