

Lanzar® OPTIDRIVE



OPTIAT94A

**800 Watts Motorcycle/ATV/Snowmobile Mount
with Dual Handle-bar Mount Chromed
Plastic Weatherproof 3-Inch Speakers
W/Amplifier Built-In W/Bluetooth
In-Line Control For iPhone, iPad,
iPad Mini, Cell Phone Etc.**

OWNER'S MANUAL

www.lanzar.com

Congratulations on your purchase of this *Lanzar*[®] **OPTIDRIVE** premier amplified speaker system. Like all *Lanzar*[®] products, this motorcycle system has been thoroughly tested to ensure consistent, reliable performance under some rigorous conditions. Our systems were designed to withstand water, moisture, heat, and direct sun exposure. We pride ourselves in customer satisfaction. If you should have any questions regarding the installation and/or operation of your *Lanzar*[®] **OPTIDRIVE** Series motorcycle speaker system, which is not covered in this manual, please contact your *Lanzar*[®] Dealer or *Lanzar*[®] Technical Support.

OPTIAT94A

800 Watts Motorcycle/ATV/Snowmobile Mount with Dual Handle-bar Mount Chromed Plastic Weatherproof 3-Inch Speakers W/Amplifier Built-In W/Bluetooth In-Line Control For iPhone, iPad, iPad Mini, Cell Phone Etc.

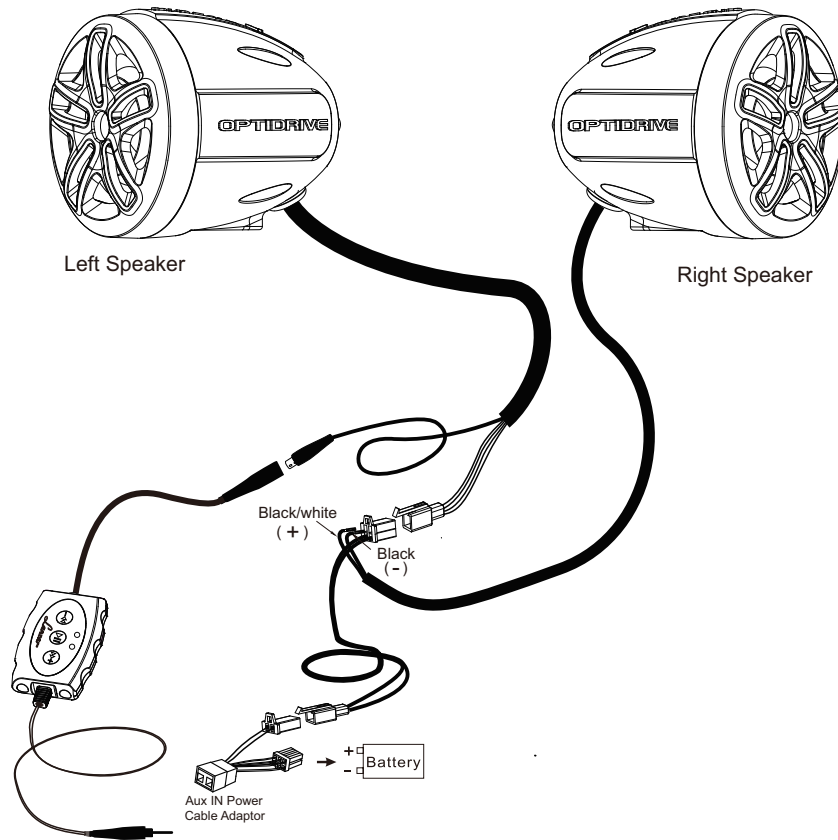
- 400 Watts X 2 channel micro amplifier built in the speaker enclosure with Wire harness
- Pair of handlebar Mounting clamps
- Chrome stainless universal handlebar audio mount
- Easy Chrome Stainless Mounting Brackets and Accessories included
- Environment resistance and water proof Bluetooth and in line volume control console with 3.5mm Stereo Input Jack, Easy Connection to the Output of Other Audio Devices
- Works with iPhone/Smartphones, iPod/MP3 Players, Cell Phones, etc.
- 3" Shiny Black Plastic Bullet Speaker with Supreme High Temperature Voice Coil Neodymium Magnet Structure
- Bluetooth 3.0 technology
- Bluetooth auto connected while power on
- Bluetooth auto disconnected while Aux-in (3.5mm connector)
- Easy and quick installed handle-bar mount bracket is included
- Speaker Dimension: 4.21"(W) x 4.21"(H) x 5.27"(L)
- Bluetooth console Dimension: 2.09"(W) x 0.83"(H) x 3.15"(L)

What is included?

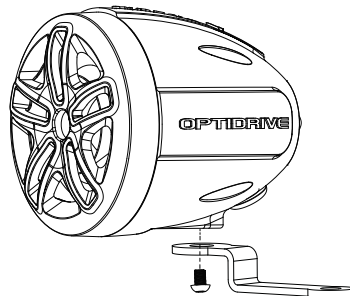
Upon un-packing your new *Lanzar* OPTIDRIVE Series audio system, Please check to ensure you have all the included parts.

Part# with Image	OPTIAT94A
#1 	400 Watts X 2 channel micro amplifier built in the speaker enclosure with Wire harness
#2 	(1) "P" shape clamp Handlebar for Bluetooth Control Box
#3 	(1) "Z" shape bracket Handle bar for Bluetooth Control Box
#4 	(1) Universal 12 Volt Wire Harness Connection
#5 	(1) 12 Volt Direct Plug, for Compatible Motorcycles
#6 	(1) Bluetooth Controller
#7 	(1) EVA PAD (1) RUBBER PAD
#8 	(6) Black Wire Tie Lockable Straps
#9 	(2) Screw, Washer for Speaker Bracket
#10 	(1) Screw, Washer and Nut for Bluetooth Control Box
#11 	(2) Black stainless handle bar mounting clamps for speakers

Connections



Loudspeaker Mounting Diagram

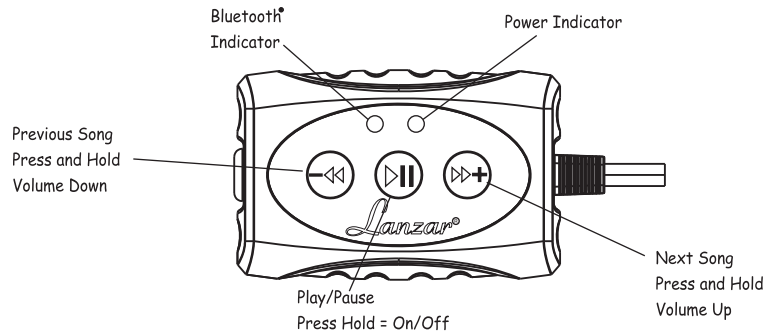


Installation

1. Screw the brackets to the bottom of the speakers.
2. Find a safe, ideal mounting location and fit the brackets over the chosen mounting bars.
3. Fasten the mounting screws after you review the safety of the mounting location

Wiring

1. Be sure to run the wiring securely and far away from any moving components.
2. Connecting the power cable to the power source: you will need to connect the 12V red wire to a (fused 5A) switched power source
3. Use the 3.5mm stereo jack to connect to your entertainment source (MP3 player, etc)
4. Use your player device and wired remote bluetooth control box to control your level of loudness.



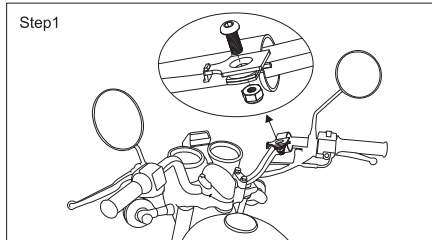
Bluetooth Pairing and Connection:

1. Connect Bluetooth controller box to your device
2. Press and Hold >|| for three seconds until power indicator lights (red)
3. The system will automatically go into pairing mode
The power indicator will turn red for about 7 seconds and then alternating red and blue (Bluetooth blue Power red)
Please be sure that Bluetooth is turned on your device Select Lanzar on your device to connect Bluetooth controller (if the Bluetooth controller is connected the light will turn blue and not flash)
4. When the device is out of Bluetooth range, Bluetooth will be disconnected automatically and automatically reconnect when detected in range again. (If not please just repeat steps 1 and 2)
5. When Bluetooth is disconnected or the 3.5mm AUX Input is plugged in, the power indicator will glow red.

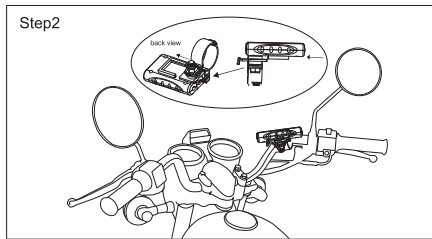
Playing Music:

1. Press >|| to start or pause the music
2. Press >>+ shortly for next track, Press and hold for Volume up
3. Press -<< shortly for previous track, Press and hold for Volume down

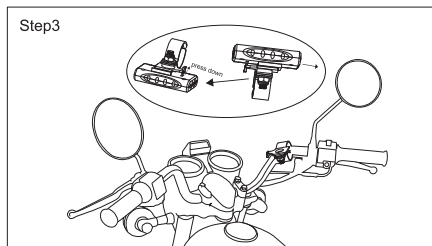
BLUETOOTH INSTALLATION



1. Install "P" shaped clamp (item#2) or "Z" shaped bracket (item#3) threaded on to the Bluetooth controller hook. (packed with Bluetooth controller). Use the provided bolt (item#10) to fix on the handlebar, it can be adjusted the tightness by provided EVA & rubber pad.(item#7)



2. Slide the Bluetooth controller into the hook.



3. Press down the Bluetooth controller hook and then slide out the Bluetooth controller box at the same time to remove the the Bluetooth controller .

Lanzar[®]
OPTIDRIVE

www.lanzar.com