



198.00mm Outside of Grille

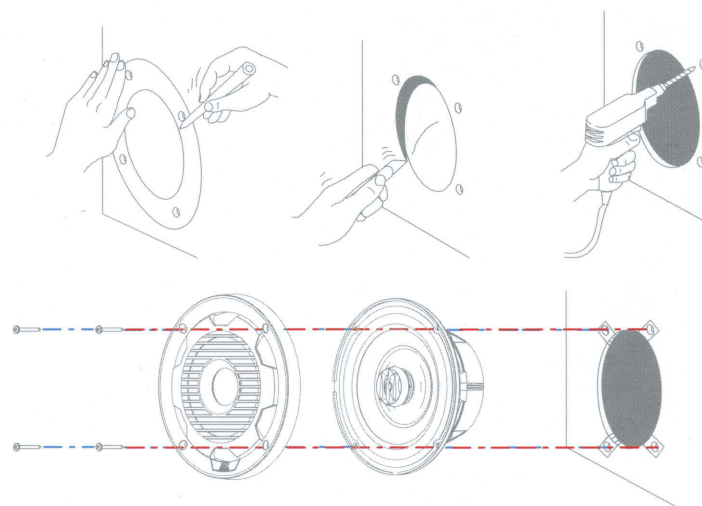
188.13mm Outside of Speaker Basket

160.00mm Mounting Cutout

WET77

7.7" 2-WAY COAXIAL

WOOFER MOUNTING



MTX RECOMMENDS THAT YOU
HAVE YOUR NEW SPEAKERS
INSTALLED BY AN AUTHORIZED
MTX RETAILER.



MTX.COM



WET77-W

150W Peak Power

7.7" 2-WAY COAXIAL



This box contains a highly sophisticated, performance machine.

The enclosed speakers are designed to deliver the highest levels of clarity. These should only be used by someone that is looking to take their in-boat listening experience to a level others have only dreamed about.

If you are one of these people, congratulations! Use caution when listening to and sharing your system, prolonged exposure to a high performance stereo system may cause jealousy and stereo envy among your friends.

You have been warned.

Now install it, get in, and turn it up.

MTX Audio - Feel the Thunder



This box and its packing materials are 100% recyclable.



DESIGNED AND ENGINEERED
IN MONROE, WI U.S.A.
MADE IN CHINA



© 2014 Mook Corp. All rights reserved. MTX is a trademark of Mook Corp.
Due to continual product development, all specifications are subject to change without notice.
MTX Audio, 4345 East Baseline Road, Phoenix, Arizona 85042 U.S.A. MTX004755 RevA 1/14

SPECIFICATIONS

7.7" Coaxial
Mounting Depth: 3.01"
Power Handling: 75 Watts RMS
Power Handling: 150 Watts Peak
Sensitivity (2.83V/1m): 87.5dB
Frequency Response: 54Hz-22kHz
Impedance: 4 Ω

WERTE

195.58mm Zoll Coaxial
Zoll Einbautiefe: 76,5mm
Spitzen-Belastbarkeit: 75 Watts RMS
Spitzen-Belastbarkeit: 150 Watts Peak
Empfindlichkeit (2,83V/1m): 87,5dB
Frequenzgang: 54Hz-22kHz
Impedanz: 4 Ω

ESPECIFICACIONES

Coaxial de 195.58mm
Profundidad de montaje: 76,5mm
Administración de potencia: 75 vatios RMS
Administración de potencia: 150 vatios máx
Sensibilidad (2.83V/1m): 87,5dB
Respuesta de frecuencias: 54Hz a 22kHz
Impedancia: 4 Ω

CARACTÉRISTIQUES

Coaxial 195.58mm
Profondeur de montage de: 76,5mm
Puissance admissible de: 75 watts efficaces
Puissance admissible de: 150 watts en crête
Sensibilité (2,83V/1m): 87,5dB
Réponse en fréquence: 54Hz à 22kHz
Impédance: 4 Ω

MTX[®]
AUDIO
MTX.COM





Warranty Card

WARRANTY:

This Warranty Statement applies to products purchased in the United States of America only. Products purchased outside the United States of America are subject to the warranty offered by the authorized distributor/retailer in the respective country/area where the product is sold and purchased.

Mitek Mobile products (including MTX, Streetwires, Coustic and Magnum) purchased in the USA from an authorized Mitek retailer are guaranteed to be free from material defects in products and workmanship for five (5) years to the original end user purchaser, subject to the terms and conditions below.

The warranty period begins the day the product is purchased by the end user, and is limited to the original retail purchaser of the product. Products found to be defective in materials or workmanship during the first 2 years will be, at Mitek's option, repaired or replaced by Mitek at no charge. When a product is replaced during first 2 years, the warranty does not renew, it continues on from the original date of purchase. The prorated purchase price of any product which becomes defective after the first two years and prior to the end of the warranty period may be credited toward the purchase of a new Mitek product. The amount of the proration shall be determined by dividing the purchase price by the number of months of the warranty period (60), and then multiplying the result by the number of months remaining in the warranty period. Any partial months will be rounded to the nearest whole month. For example, a product purchased 37 months ago for \$100 would be calculated by dividing \$100 by 60 months = \$1.66/month, multiplied by 23 (the months remaining in warranty period) for a prorated warranty amount of \$38.33.

You are responsible for all costs for removal, re-installation and proper packaging, shipping, insurance or other freight charges incurred in the shipment of the product or part to Mitek. Mitek will ship the repaired or replaced Mitek product or replacement parts to you at no charge. Mitek reserves the right to utilize reconditioned, refurbished, repaired or re-manufactured products or parts in the warranty repair or replacement process. Such products and parts will be comparable in function and performance to an original product or part and warranted for the remainder of the original warranty period.

This warranty does not cover the product if it has been subject to neglect, abuse, misuse, incorrect connection, or if it has been subject to unauthorized repair or alterations of any nature, or if the serial number has been altered or removed, and the warranty does not extend to cosmetics or finish. This warranty only applies to products installed and used in the USA.

Customers in the USA must contact Mitek Warranty via our website at MTX.com, or via email at mitekwarrenty@mitekusa.com, or by calling 800-556-2888. If you did not purchase the product directly from Mitek, a proof of purchase must be provided in order to receive warranty consideration. You will be issued a Return Authorization (RA) number which must be written on the outside of the package before returning the product to Mitek.

For more information visit mtx.com.