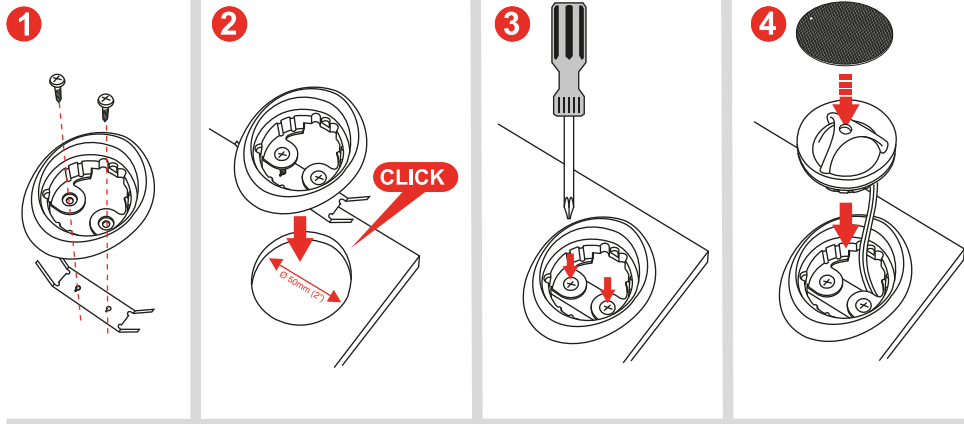
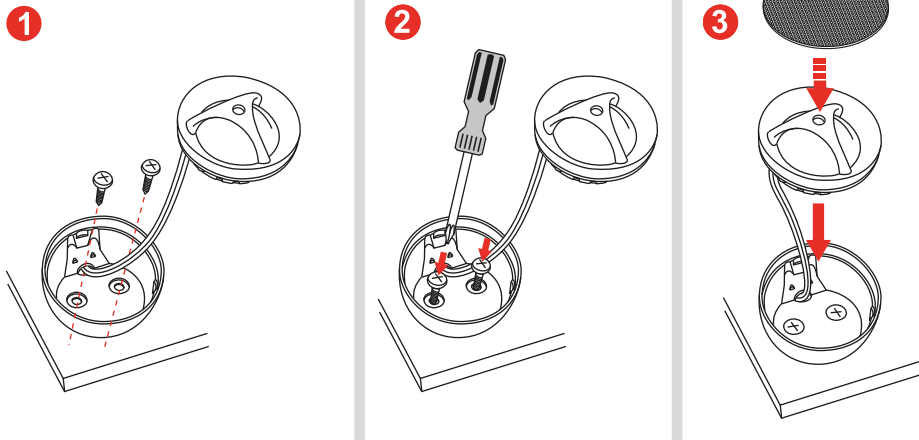


Flush mounting for 50 mm (1.96") cutout



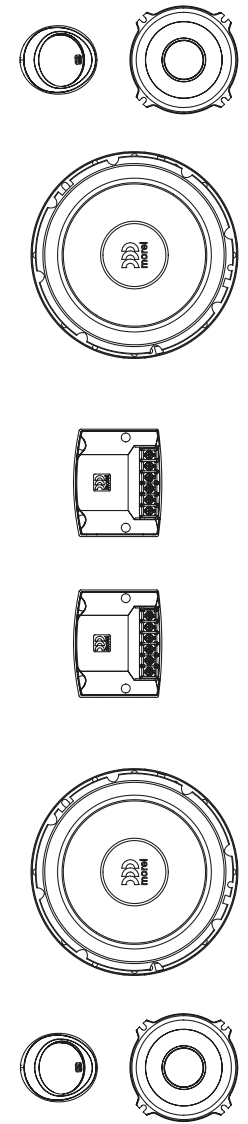
Surface mounting option 2



Specifications

Maximo Ultra 603

Nominal Impedance	4 ohm
Power Handling	100W
Max. Transient Power Handling	180W
Sensitivity (2.83V/1M)	90.5dB
Frequency Response	50-20,000 Hz
Voice Coil Diameter	Woofer: 25mm(1") Tweeter: 25mm(1") Mld: 20mm(0.8")
Voice Coil Wire	Copper
Magnet System	Woofer: High grade ferrite magnet Tweeter: Neodymium
Mounting Depth	63mm (2.5")

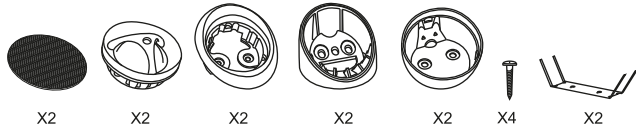


maximo ultra MklII
Car Audio Component Speaker System

603 6.5" 3 Way

content

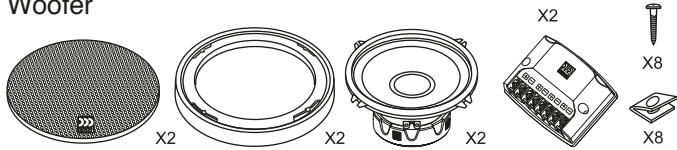
Tweeter



Mid range

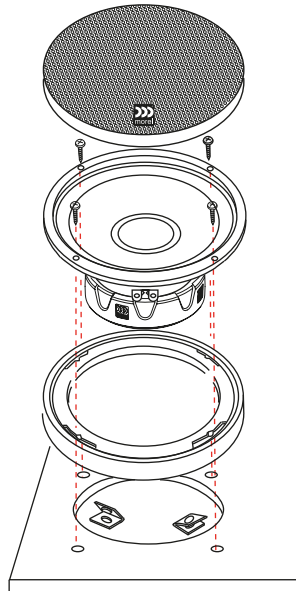


Woofers

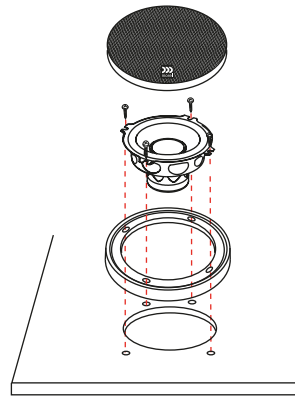


Woofer and Mid mounting

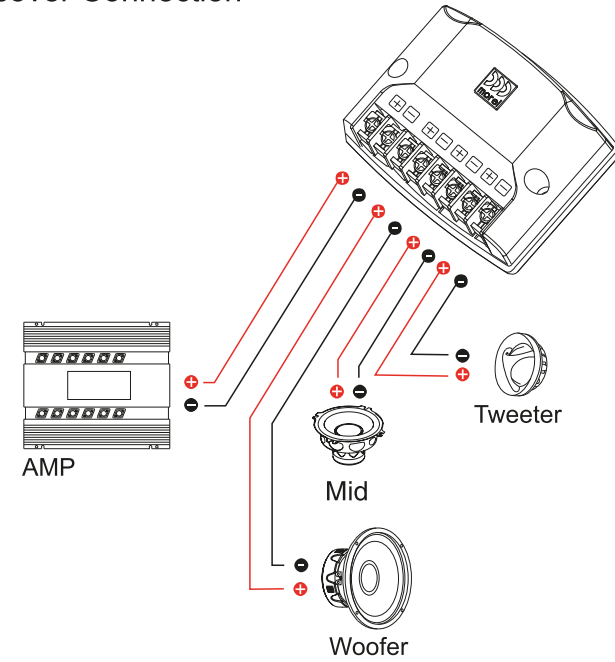
6.5"



2.5"



Crossover Connection



Surface mounting

