

M

SPEAKER® SYSTEM®

master stroke

MS 650II

Gttrading保留对所示产品进行修改或改进的权利，恕不另行通知 - 所示产品的可用性可能会有所更改 - 本用户指南中描述的产品仅代表可用STEG产品的一部分 - 提及的所有品牌和商标 仅用于描述目的，所有权利归属于所有者 - 禁止全部或部分复制本用户指南。

G.T.trading reserves the right to make modifications or improvements to the products illustrated without notice thereof-The availability of the products illustrated is subject to change-The products described in this User's Guide represent just a part of the STEG products available-All brands and trademarks mentioned have been used exclusively for description purposes and all rights belong to the respective owners-Total or partial reproduction of this User's Guide

product concept
engineering
production
distribution

GTtrading
CAR & HOME AUDIO HI-FI EQUIPMENT

ITALY
www.gt-trading.it
info@gt-trading.it



用户指南

大师级喇叭系列

USER'S GUIDE
Master Stroke Speaker Series



- ▶ 长时间在大音量下聆听音乐可能会损害您的听觉，并影响您的驾驶安全。
- ▶ Listening to high sound pressure levels over a prolonged period of time may harm your hearing.

安全须知:

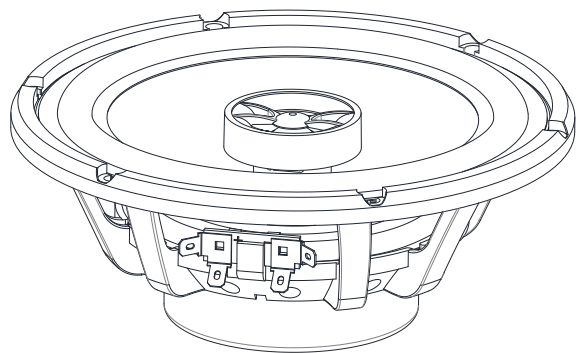
- 在打孔安装本产品之前，请确认安装空间是否合适，并仔细阅读、理解所有相关说明，如果由于未遵循说明而造成损害，则将不能享受保修。
- 请使用随附的安装配件，以确保安装安全稳固。
- 切勿在超出最大功率的情况下使用该扬声器。
- 为了防止噪音干扰，请确保接线远离发动机，高压导线和其它潜在的噪音来源。
- 为防止短路，请确保布线避开运动的部件和锋利的边缘。
- 用柔软的布清洁该扬声器，切勿使用酒精、化学品或家用清洁剂等物质清洁本产品。

保证条件:

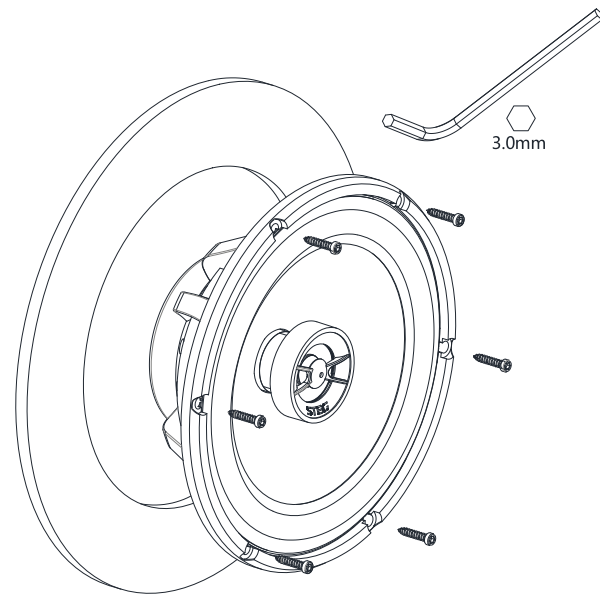
- 所有STEG扬声器均由您所在国家的官方STEG经销商制定的保修服务。
- 您的经销商可以提供有关担保条件的所有详细信息。保证范围至少延伸至原始购买发票所在国有效的法律保证中所授予的范围。

用户手册:

感谢您购买STEG品牌喇叭，这是一款专门为您精心设计和研发的 **master stroke** 系列同轴喇叭。您的满意是我们孜孜不断的追求，更是我们前进的动力！本产品已经通过全面的测试，以确保其性能的一致性和可靠性。



同轴喇叭安装示意图:



同轴喇叭技术参数:

鼓纸材质：特殊配方纸音盆+进口橡胶边

持续功率：60 瓦

频率响应：65-20000 赫兹

IMP：4.0 ohm

Fo：65.00 Hz

SPL：88 dB

Sd：132.7 cm²

Bl：3.76 Tm

Qms：3.88

Qes：0.974

Qts：0.78

No：0.40%

Vas：112.74Ltr

Cms：509.38mm/N

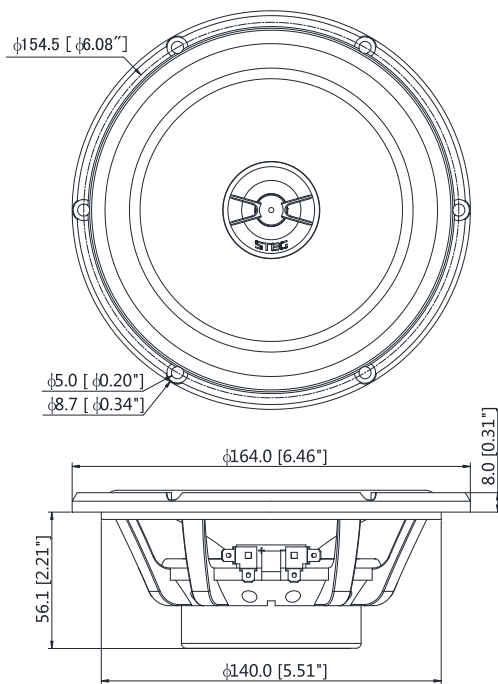
Mms：10.8g

Mmd：9.92mKg

重量：0.63公斤

安装深度：60 毫米

安装直径：142 毫米



产品包装清单:

同轴喇叭	X2
用户指南	X1
保修卡	X1

Safety instructions:

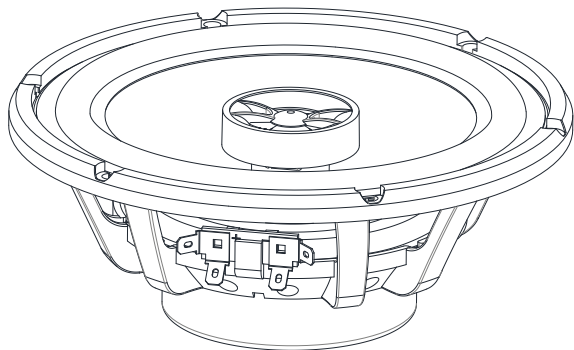
- Before installing this product, make sure that the installation space is appropriate and read and understand all the instructions. If you do not follow the instructions, you will not be able to enjoy the warranty.
- Use the supplied mounting accessories to ensure safe and secure installation.
- Do not use the loudspeaker beyond maximum power.
- To prevent noise interference, make sure that the wiring is away from the engine, high voltage wires, and other potential noise sources.
- To prevent short circuits, make sure that wiring avoids moving parts and sharp edges.
- Clean the speaker with a soft cloth and do not use alcohol, chemicals, or household cleaners to clean the product.

Guarantee conditions:

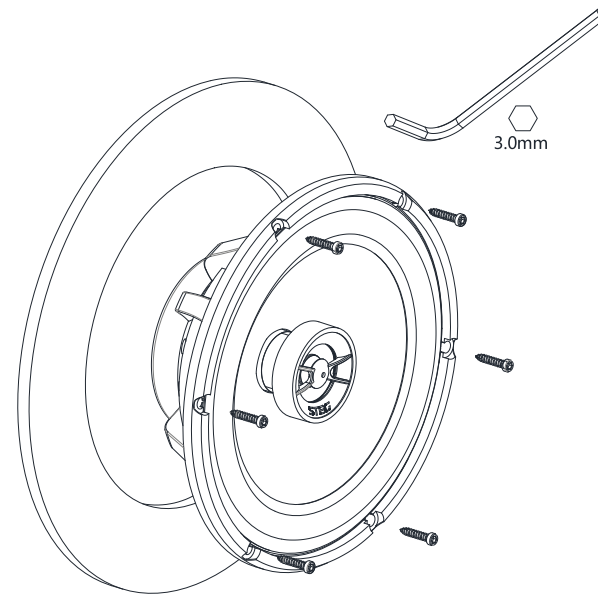
- All STEG speakers are covered by the official STEG dealer in your country.
- Your dealer can provide all the details about the warranty. The scope of the guarantee extends at least to the extent permitted by the legal guarantee in the country where the original purchase invoice is located.

User manual:

Thank you for purchasing the STEG brand speaker. This is a **MASTER STROKE** series coaxial speaker designed and developed specifically for you. Your satisfaction is our constant pursuit, and it is our driving force! This product has passed comprehensive tests to ensure its performance consistency and reliability.



Installation Diagram:



Speaker technical data:

Cone material: Special paper cone + Imported edge

Continuous Power: 60 W

Frequency Range: 65-20000 Hz

IMP: 4.0 ohm

Fo: 65.00 Hz

SPL: 88 dB

Sd: 132.7 cm²

Bl: 3.76 Tm

Qms: 3.88

Qes: 0.974

Qts: 0.78

No: 0.40%

Vas: 112.74 Ltr

Cms: 509.38 mm/N

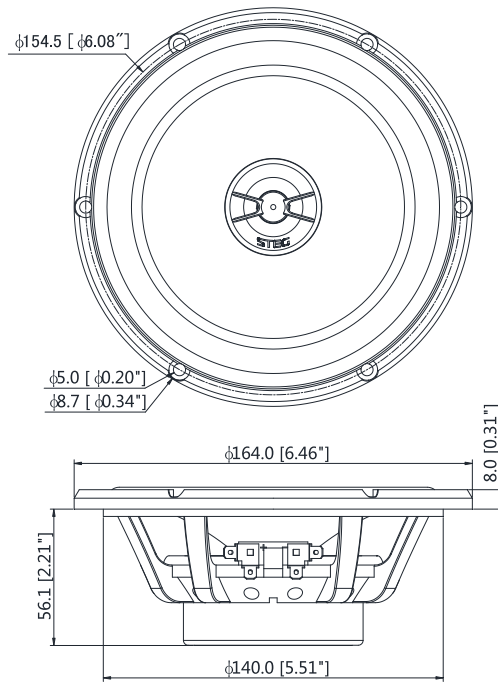
Mms: 10.8 g

Mmd: 9.92 mKg

Weight: 0.63 KG

Mounting Depth: 60 mm

Mounting Diameter: 142 mm



Packing list:

Coaxial Speaker	X2
User Manual	X1
Warranty Card	X1

► 感谢您的查阅！

► Welcome to consult!